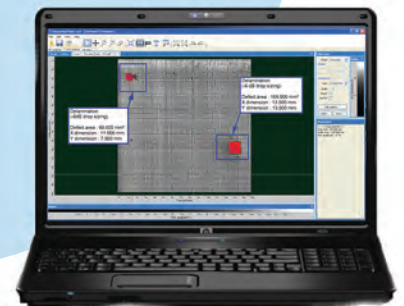


# ARMANDA SCANNER

The ARMANDA system is a Multi-Technology X-Y Automated Robotic Mechanical Arm specifically designed for the Nondstructive Assessment of Metallic and complex Composite structures. The ARMANDA scanner is fully integrated solution which include a UT pulser/receiver and TecView™ designed for complex NDT scanning applications.



Fully Integrated Solution  
with TecView™ & UTPR pulser



## Scanner specifications

Axis	Accuracy	
Scanning Resolution	0.0005"/Step	0.0127mm/Step
Indexing Resolution	0.005"/Index	0.127mm/Index
Scanner Speed (X/Y Axes)	10"/Sec	254mm/Sec
Scanning Rate	5 KHz	
Minimum Curvature Radius	14"	350mm

The ARMANDA consists of a light weight portable Arm that incorporates conventional Ultrasonic, Advanced Guided Ultrasonic Waves, Eddy Current, Pulsed Eddy Current and Time-Of-Flight-Diffraction technologies. Due to its flexible rail fixtures the ARMANDA has the ability to scan contoured and edge surfaces and can operate in vertical as well as horizontal orientations. A suction cups support system helps secure the scanner to the inspected part, a feature that is crucial when inspections are done vertically or on contoured surfaces. In addition, the ARMANDA is equipped with a spring loaded Z-axis which improves the accuracy of transducer positioning and assures constant coupling between the probe and the inspected part.



# ARMANDA SYSTEM

When combined with one of our TecView™ software packages and an industrial Lunchbox computer, the ARMANDA system becomes a fully **Integrated Solution** designed for the inspection of Aircraft skin, Metallic and Composite structures as well as for a whole range of other applications.

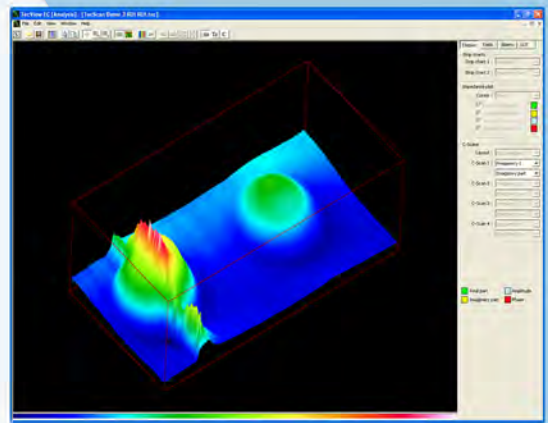
The scanner can be easily disassembled and stored in the provided transportation box for site inspections.

## ARMANDA's major applications are:

- Flaw Sizing
- Weld Inspections
- Corrosion Mapping
- Metallic Structures
- Composite Structures
- Rapid inspection of large or inaccessible areas

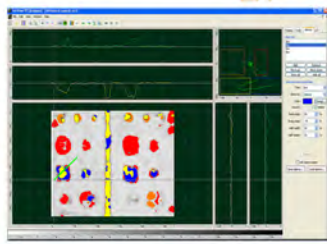
## TecView™ Software packages

TecView™ consists of a suite of software packages that comprises Ultrasonic, Eddy Current, Pulsed Eddy Current and Time-Of-Flight-Diffraction technologies. Combining the best of Windows operating systems and graphical user interface, TecView™ makes the NDT process simple and rapid. The software aids the user to setup the inspection parameters and it incorporates different modules including Data Acquisition and Management, Robotic control, Imaging as well as Data Analysis and Interpretation.

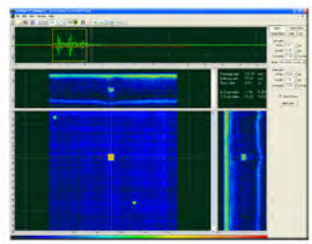


Advanced tools can display 3D projections for a better illustration of the detected defect.

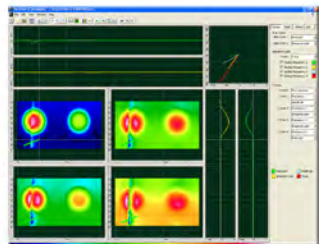
### TECVIEW™ BT



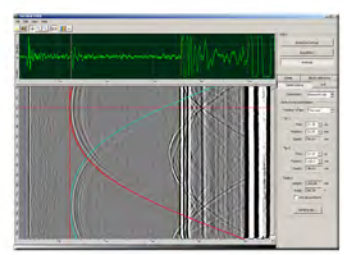
### TECVIEW™ LT



### TECVIEW™ EC



### TECVIEW™ TOFD



## System Features

- Fully Automated Data Acquisition Scanner
- Compatible with multiple NDT technologies: UT, EC, BT and TOFD
- A complete integrated solution: an Automated Scanner, a TecView™ acquisition and analysis software package, a portable workstation, and a Travel case.